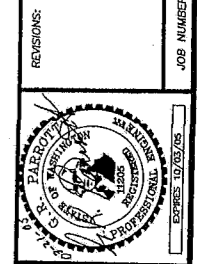
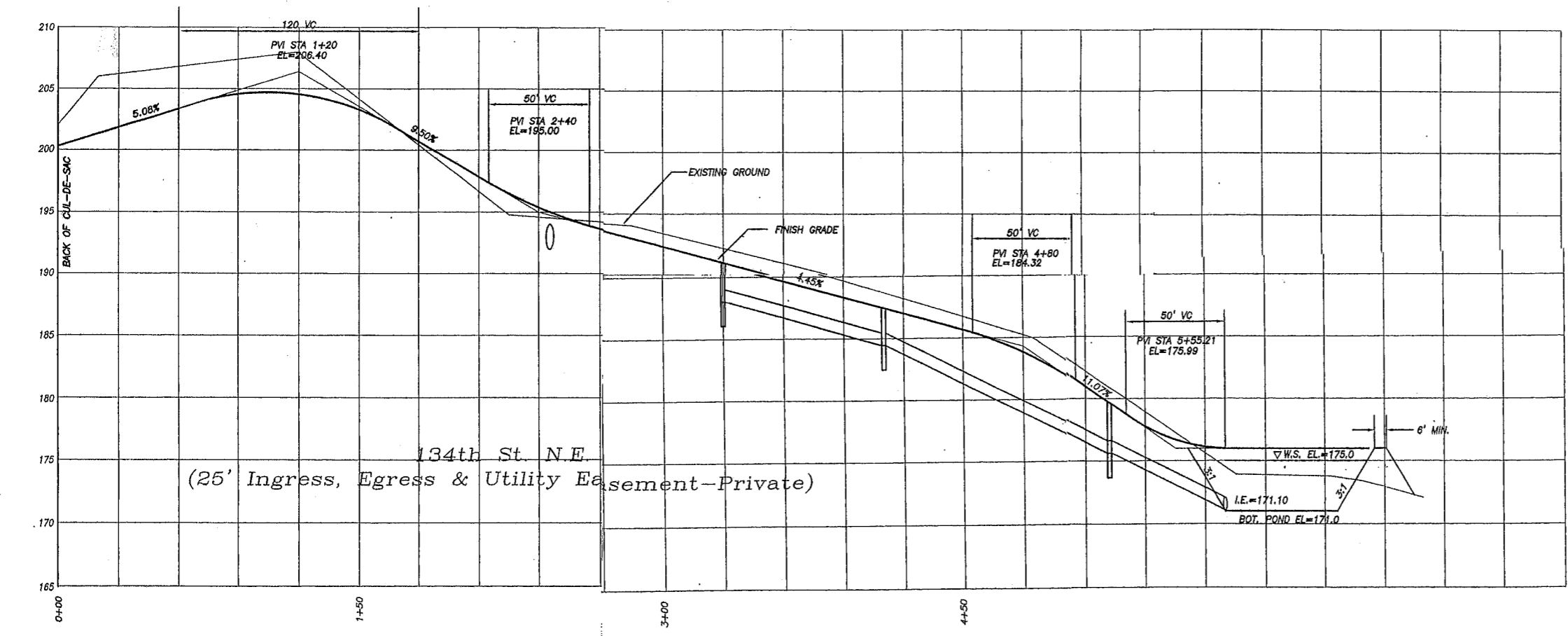
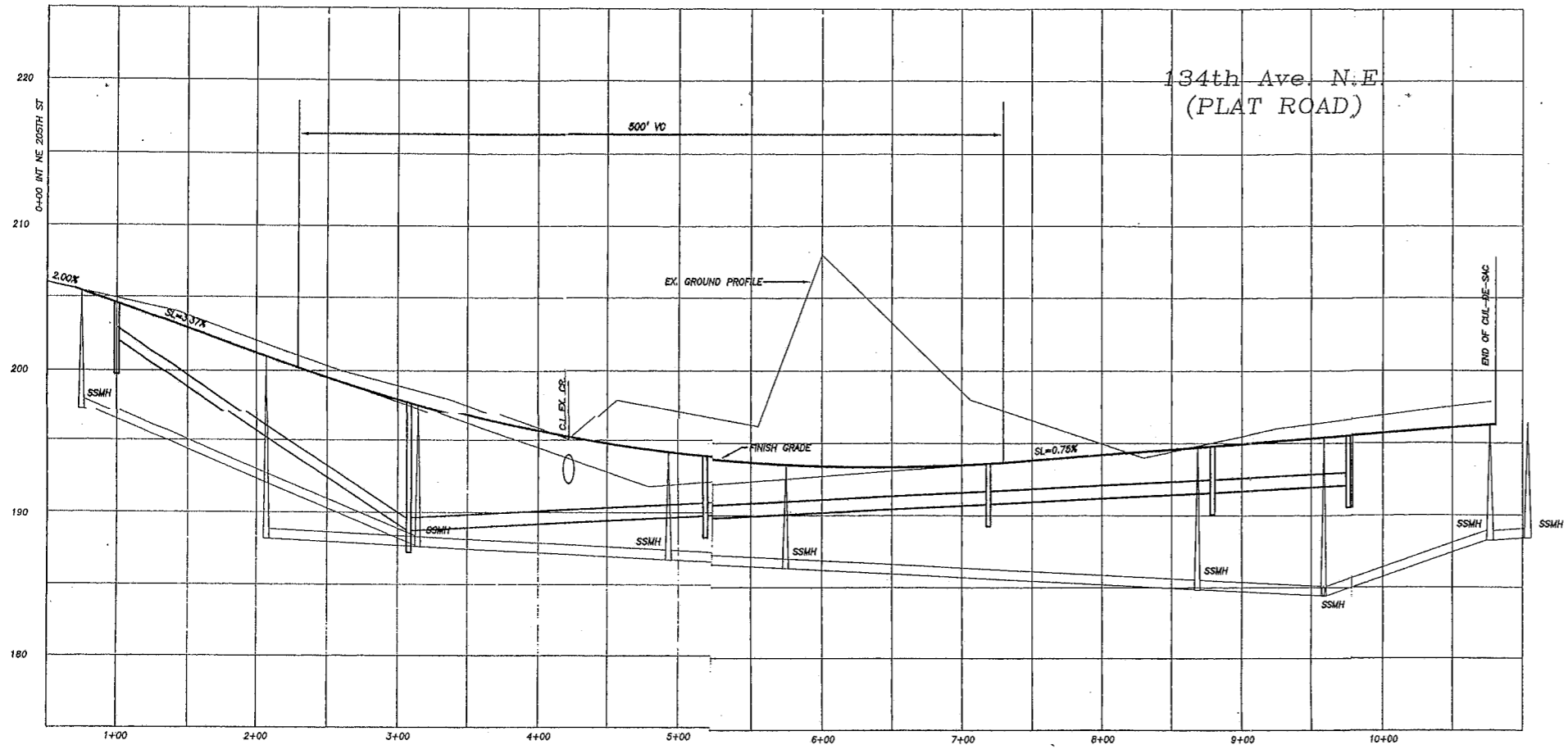


EXHIBIT 13
PAGE 1 OF 4



G.R. (BOB) PARROTT, P.E.
CONSULTING CIVIL & TRANSPORTATION ENGINEERING
PO BOX 2715
WOODINVILLE, WA. 98072
(425) 481-3027 - OFFICE/FAX

PROFILE
Georgian Heights
PHASE 4

SHEET: 3 OF 4

DATE: 4/20/2004
JOB NUMBER:
CHECKED BY: D.W.
DRAWN BY: G.R.P.