

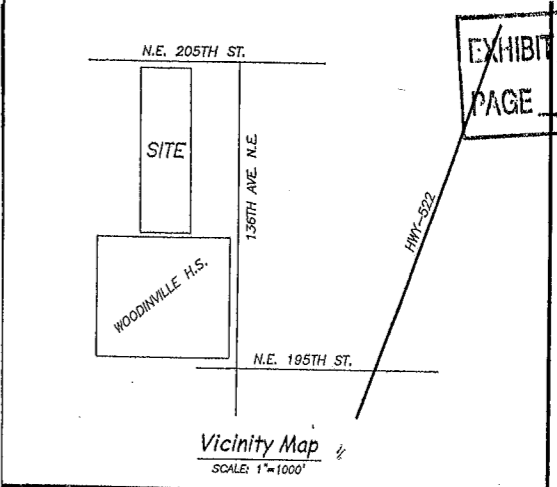
LANDSCAPE PLAN LEGEND:

TREES	SYMBOL	COMMON NAME	SIZE	QUANTITY
Acer Platanoides		Norway Maple	2"	53
		H.G.P.A. SIGN	12"x16"	37

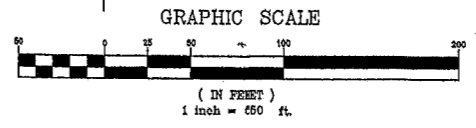
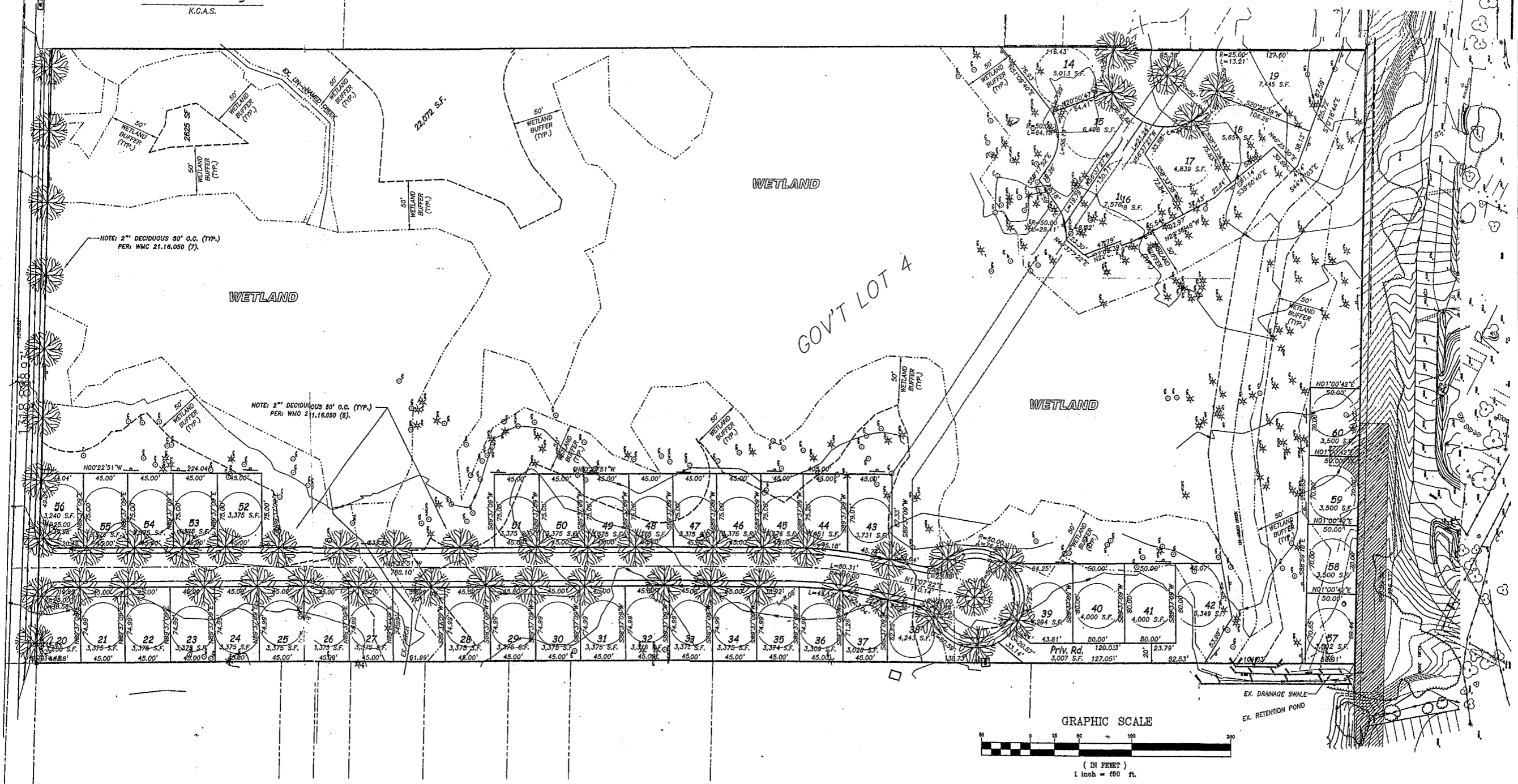
NOTE:
ANY 12" DIA. OR GREATER TREE REMOVED FROM BUFFER FOR CONSTRUCTION SHALL BE REPLACED WITH 6" EVERGREEN TREES 3 TO 1 RATIO.

**Georgian Heights PHASE 4
Tree Retention Listing**
Buildable Area: 225,336 s.f. (5.17 acres)
Required Tree Credits: 5,17 x 30 = 155.1
Existing Tree Density retained: 165.54

48" Fir lot 20 (9.6 credits per WMO)	54" Maple lot 54 (13.6 credits)	12" Alder lot 16 (8 credits)
20" Maple lot 23 (2.2 credits)	34" Maple lot 54 (8.3 credits)	9" Hemlock lot 18 (5 credits)
15" Maple lot 23 (1.2 credits)	31" Maple lot 53 (8.2 credits)	11" Hemlock lot 18 (9 credits)
12" Maple lot 23 (0.8 credits)	26" Maple lot 53 (3.7 credits)	13" Hemlock lot 18 (9 credits)
11" Fir lot 24 (1.4 credits)	16" Hemlock lot 50 (1.4 credits)	10" Hemlock lot 18 (6 credits)
18" Alder lot 24 (1.4 credits)	15" Alder lot 50 (1.2 credits)	12" Hemlock lot 18 (6 credits)
15" Maple lot 26 (1.2 credits)	12" Maple lot 49 (8 credits)	12" Hemlock lot 18 (6 credits)
30" Cedar lot 27 (4.8 credits)	14" Maple lot 49 (1.1 credits)	12" Hemlock lot 17 (8 credits)
17" Maple lot 31 (1.6 credits)	16" Maple lot 44 (1.4 credits)	24" Cedar lot 17 (3.1 credits)
11" Cedar lot 32 (7 credits)	10" Fir lot 43 (6 credits)	18" Hemlock lot 17 (1.8 credits)
22" Cedar lot 32 (2.6 credits)	22" Hemlock lot 43 (2.6 credits)	18" Hemlock lot 17 (1.8 credits)
13" Cedar lot 32 (3.9 credits)	11" Fir lot 14 (7 credits)	24" Cedar lot 18 (3.1 credits)
10" Maple lot 33 (6 credits)	13" Fir lot 15 (9 credits)	14" Hemlock lot 19 (1.1 credits)
18" Maple lot 33 (1.8 credits)	16" Fir lot 15 (1.2 credits)	10" Hemlock lot 18 (6 credits)
18" Maple lot 33 (1.8 credits)	16" Fir lot 15 (1.2 credits)	22" Hemlock lot 18 (2.6 credits)
22" Maple lot 33 (2.6 credits)	16" Alder lot 15 (1.8 credits)	14" Cedar lot 18 (1.4 credits)
10" Maple lot 36 (6 credits)	11" Fir lot 18 (7 credits)	13" Fir lot 19 (9 credits)
12" Maple lot 68 (6 credits)	18" Cedar lot 16 (1.8 credits)	28" Fir lot 19 (4.3 credits)
18" Maple lot 58 (1.8 credits)	12" Alder lot 15 (2 credits)	16" Cedar lot 19 (1.4 credits)
47" Cedar lot 54 (12.0 credits)	12" Fir lot 18 (8 credits)	16" Alder lot 18 (1.2 credits)
13" Alder lot 54 (9 credits)	28" Fir lot 16 (4.3 credits)	12" Alder lot 19 (1.4 credits)
26" Maple lot 54 (3.7 credits)		15" Alder lot 19 (1.2 credits)



NE 205TH ST



REVISIONS:

LANE & ASSOCIATES
LANDSCAPE ARCHITECTURE
17228-194 ST. S.E. (480) 466-2319 OFFICE
REDMOND, WA 98058

DRAWN BY: B.G. CHECKED BY: B.L.

LANSCAPE PLAN/TREE RETENTION

Georgian Heights
Phase 4

SHEET: 4 OF 4